

Four times the experience.
Four perfect reasons to buy your first home.



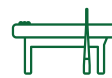
NEXT TO
THE 105-ACRE
TREASURED
ATTUR LAKE



A 10.2 ACRE
MASTER
PLANNED
DEVELOPMENT



TEMPERATURE
CONTROLLED
SWIMMING POOL
(1ST IN ITS CATEGORY)



20,000 SQ. FT.
CLUBHOUSE
WITH OPEN SPACES
AND 40+ AMENITIES

AJMERA
LAKESIDE
paradise

📍 YELAHANKA



STAND WITNESS TO THE FUSION
OF SERENITY AND OPULENCE

AJMERA
LAKESIDE
paradise

Welcome to AJMERA LAKESIDE PARADISE,
a coveted haven designed for those with discerning tastes.
This idyllic sanctuary transcends ordinary living, providing an
unparalleled blend of lifestyle, activities and immersive experiences,
ensuring an enchanting childhood for your little ones.
Inspired by iconic lakeside destinations worldwide, we have crafted a
picturesque lakeside residence in the heart of Yelahanka.
Spread across 10.2 acres, this marvel is strategically located within
minutes of all your essentials, boasting expansive natural vistas outside
and generously proportioned living spaces within.
Our distinctive lakeside experiential lifestyle promises a harmonious
fusion of elegance, grandeur and excitement within the nucleus of a
low-density development. The 20,000 sq. ft. grand clubhouse, adorned
with open areas and themed like a resort, offers unique amenities for a
holistic living experience. AJMERA LAKESIDE PARADISE is
positioned as the pinnacle of North Bengaluru's most esteemed locality,
setting a new standard in upscale living.

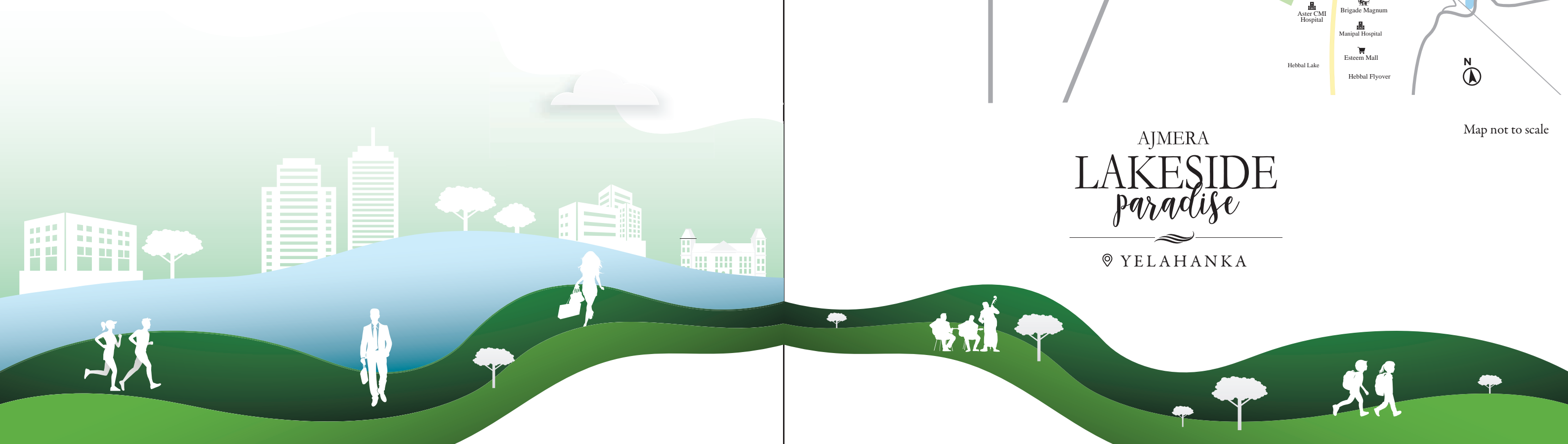
BEYOND CONNECTIVITY AND CONVENIENCE -THE WORLD AT YOUR DISPOSAL

Ajmera Lakeside Paradise offers a unique opportunity to embrace the best of both worlds. Nestled next to the natural beauty of Attur lake, this landmark address at the entrance of the high-growth North Bengaluru corridor provides an unparalleled connection to the tranquility of nature and the superior standards of comfort and convenience. With 80% open spaces, this well-designed community ensures that the necessities of the modern world are within easy reach, all just 15-20 minutes from your home. Ajmera Lakeside Paradise becomes the perfect bridge between your private world and the vibrant surroundings, redefining the way you experience connectivity and convenience.

THRIVE IN A LOCATION THAT'S AN INTERSECTION OF MANY WORLDS



AJMERA
LAKESIDE
paradise
YELAHANKA





AWAY FROM IT ALL, YET WELL WITHIN IT

Healthcare Hubs

Cytecancer Cancer Hospital | Ramaiah Medical College | Prolife Hospital | Manipal Hospital | Aster CMI Hospital | Baptist Hospital | RWF Hospital | People Tree | Akshaya Nursing Home | Neha Prakash Hospital | Deeksha Hospital | Omega Multi Speciality Hospital | Navachethana Hospital

Nature Hubs

BBMP Children Park | Puttanahalli Bird Reserve | Jarakabande Kaval | Butterfly Garden | Attur BBMP Lake Park | Yelahanka 5th phase BBMP park

Educational Hubs

Vidyashilp Academy | Ryan International School | Canadian International School | BMS Institute of Technology & Management | Chrysalis CBSE High School | The HDFC School | Delhi Public School | EuroKids Yelahanka | KidZee Playschool | Nagarjuna Vidyaniketan | Nagarjuna Pre-University College | S B College Of Management Studies | G.K. Naidu School | Ranga Public School | Swamy Vivekananda Int. Public School | Sambhram Institute Of Technology | Sri Chaitanya School | Presidency School | Mallya Aditi International School | Seshadripuram School & College | Poornaprajna Education Centre | Kendriya Vidyalaya | Millennium World School | Sapthagiri College of Engineering | Narayana E-Techno School | East West College Of Engineering | Winmore Academy | REVA University | NITTE International School

Business Hubs

RMZ Galleria Commercials | Ecopolis, IT/ITES SEZ | Kirloskar Tech Park | Brigade Opus | Brigade Magnum | Manyata Tech Park | Metropolis Business Park | Northgate Office Park | Rail Wheel Factory | Yelahanka Industrial Town | NCC Urban Windsor | Bharat Electronics Ltd | Karle Town Centre

Lifestyle Hubs

Garuda Mall | Esteem Mall | RMZ Galleria Mall | D - Mart | More Supermarket | A - Z Mini Mart | Vishal Mega Mart | Food World | Loyal City Supermarket | Reliance Fresh | Royal Mart Retail | Barbeque Nation | Beijing Bites | Kasipu



THE FUTURE HAS A FAVOURITE SPOT. NORTH BENGALURU

The next chapter in the evolution of Bengaluru is poised to unveil in North Bengaluru. With hundreds of thousands of crores in investments and tens of thousands of acres earmarked for ambitious development, this will be a signature landmark.

ITIR Zone

Spread over 10,000 acres of land, a development that will create 1.2 million direct and 2.8 million indirect job opportunities with an investment of ₹1 lac crore.

Aerospace SEZ

A 3000 acre expanse, of which 900 acres are already acquired by 48 companies, including 100 acres by HAL.

Devanahalli Business Park

A 413.65 acre development envisioned next to the airport and projected to bring in \$2.2 billion in investments across 5 to 7 years.

Aerotropolis Airport City

A development envisioning an investment of ₹30,000 crore and estimated to create 5000+ highly skilled opportunities.

Global Financial District

A 150 acre destination that will oversee an investment of ₹1000 crore and will be the hub of finance and investment.

Medical Tourism Hub

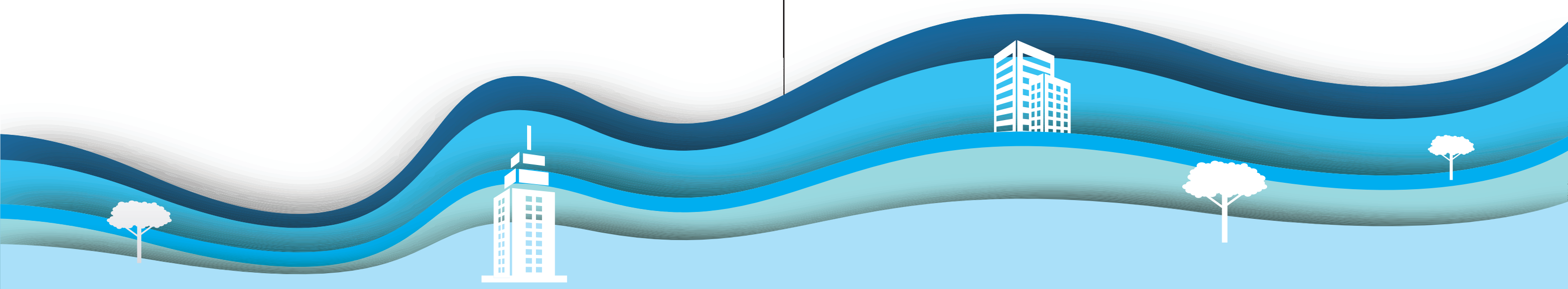
Envisioned as a 300 acre hub of which 30 acre worth investment of ₹990 crores has already been done by Narayana Hrudayalaya, Manipal Hospital and others.

Bangalore Turf Club

A 350 acre development that will house the existing club.

Hotel Projects

A land parcel dedicated to the development of the hospitality industry with leading hotel chains like Zuri, Taj, Oberoi, Hyatt and more.



WORLD-CLASS AMENITIES TAILORED TO YOUR ESSENCE



Multipurpose Hall | Party Lawn | Tree Plaza | Bonfire Area
Pedestrian Walks | Senior Citizen Court | Library / Reading Room | Gazebo
Yoga and Meditation Centre | Arrival Plaza | Open Air Gym



Children's Play Area | Toddler Pool | Kids' Zone | Hopscotch Zone
Futsal Court | Pet Park | Cricket Practice Pitch



Jogging Track | Tennis Court | Half Basketball Court
Gymnasium | Squash Court | Table Tennis | Sports Sphere | Shuttle Court



Landscaped Gardens | Mini Forest with Deck | Camping Area | Hammocks
Aroma Garden | Sensory Garden | Yoga and a Deck | Passive Court
Seating Pavilion | Flowing Water Fountain | Viewing Deck
Multipurpose Court | Lounge

Nestled at the epicentre of North Bengaluru, Ajmera Lakeside Paradise presents a lakeside experiential lifestyle like none other. Surrounded by the 105-acre Attur Lake and 80% open spaces, this haven blends every conceivable comfort and convenience, boasting a grand 20,000 sq ft clubhouse. With over 40 amenities spread across four grand paradises- Lifestyle Paradise, Active Paradise, Kids Paradise, and Experiential Paradise, your dream home awaits at Ajmera Lakeside Paradise, where perfection meets life in all its completeness.

AJMERA LAKESIDE *paradise*

MASTER PLAN



ATTUR LAKE
(105 ACRES)

- 01 SECURITY CABIN
- 02. SURFACE PARKING
- 03. 8M WIDE DRIVEWAY
- 04. ARRIVAL PLAZA
- 05 SEATING COURT
- 06. PARK AND OPEN SPACES
- 07. GRASS PAVERS ON FIRE LANE
- 08. PEDESTRIAN ENTRY TO BLOCK
- 09. CHILDREN'S PLAY AREA
- 10. PAVILION
- 11. TREE PLAZA
- 12. STEPS LEADING TO PODIUM
WITH CASCADING WATER FEATURE
- 13. SEATING UNDER PERGOLA
- 14. TODDLER'S PLAY AREA
- 15. TEMPERATURE CONTROLLED SWIMMING POOL
- 16. TEMPERATURE CONTROLLED KIDS POOL
- 17. POOL DECK
- 18. CHANGING ROOMS
- 19. OPEN SHOWER
- 20. HALF BASKETBALL COURT
- 21. SKATING RINK
- 22. MULTIPURPOSE GROUND
- 23. ENTRY/EXIT TO STILT PARKING
- 24. CIVIC AMENITIES
- 25. TRANSFORMER YARD
- 26. PLAZA WITH WATERBODY
- 27. WELL
- 28. LAKEVIEW SEATERS
- 29. TENNIS COURT
- 30. YOGA/MEDITATION ZONE
- 31. MULTI-PURPOSE COURT
- 32. OUTDOOR GYM
- 33. VIEWING DECK
- 34. BOX CRICKET
- 35. PET PARK
- 36. MINI FOREST WITH
CAMPING AREA AND HAMMOCKS
- 37. OWC LOCATION
- 38. OFFICE SPACE
- 39. OPEN AIR LOUNGE SEATING

- ▶ MAIN ENTRY/EXIT
- ▶ TOWER ENTRY AT PODIUM LEVEL
- ▶ STILT ENTRY/EXIT

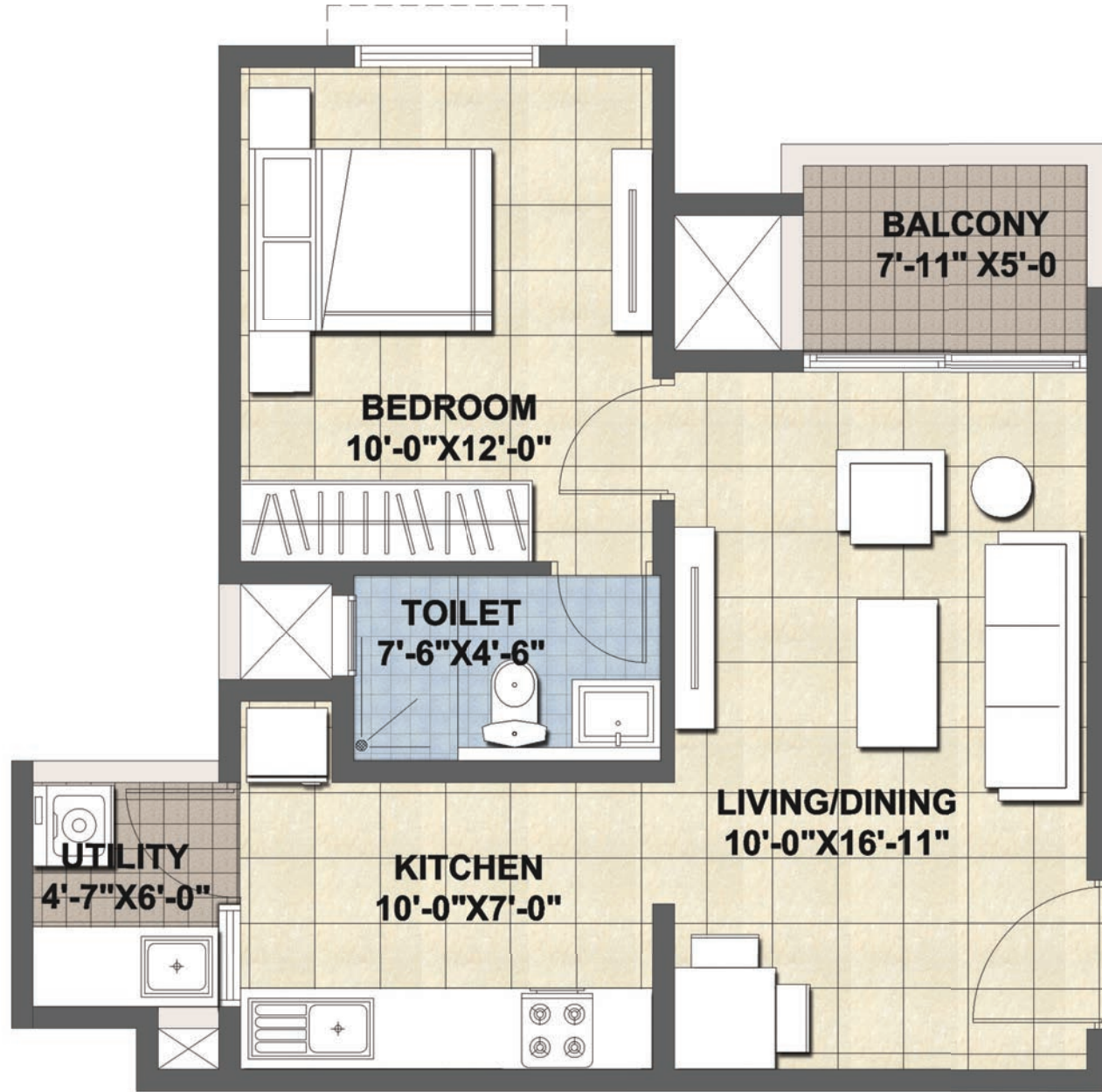
*Wing E,F and G are for future development

Disclaimer - Artist impression of actual space. Amenities indicated here in pertain to entire layout and will be constructed when all the phases are developed. The location and provision of amenities are at the proposed stage and are subject to approval from the management and authorities.

RERA REGISTRATION NO.: WING A & B - RERA NO: PRM/KA/RERA/1251/309/PR/180728/001945 | WING C & D - RERA NO. PRM/KA/RERA/1251/472/PR/200323/003375

Map not to scale

WHERE EVERY SQUARE FEET
IS AN ODE TO YOUR LIFESTYLE

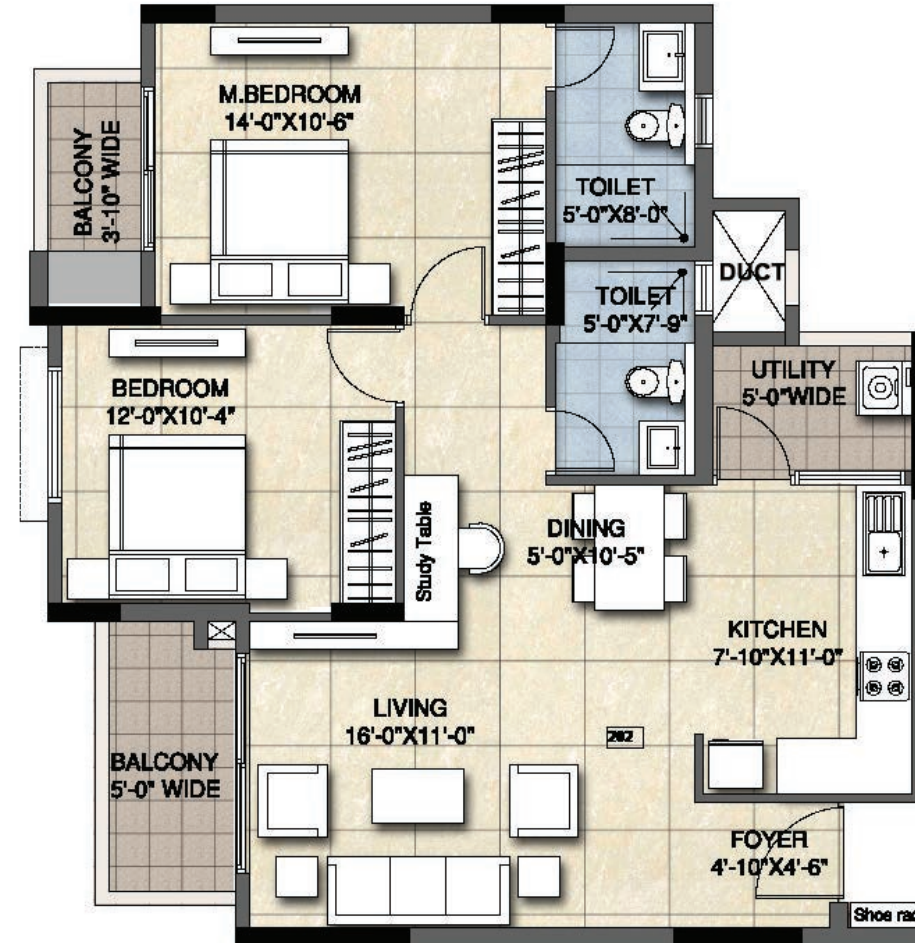
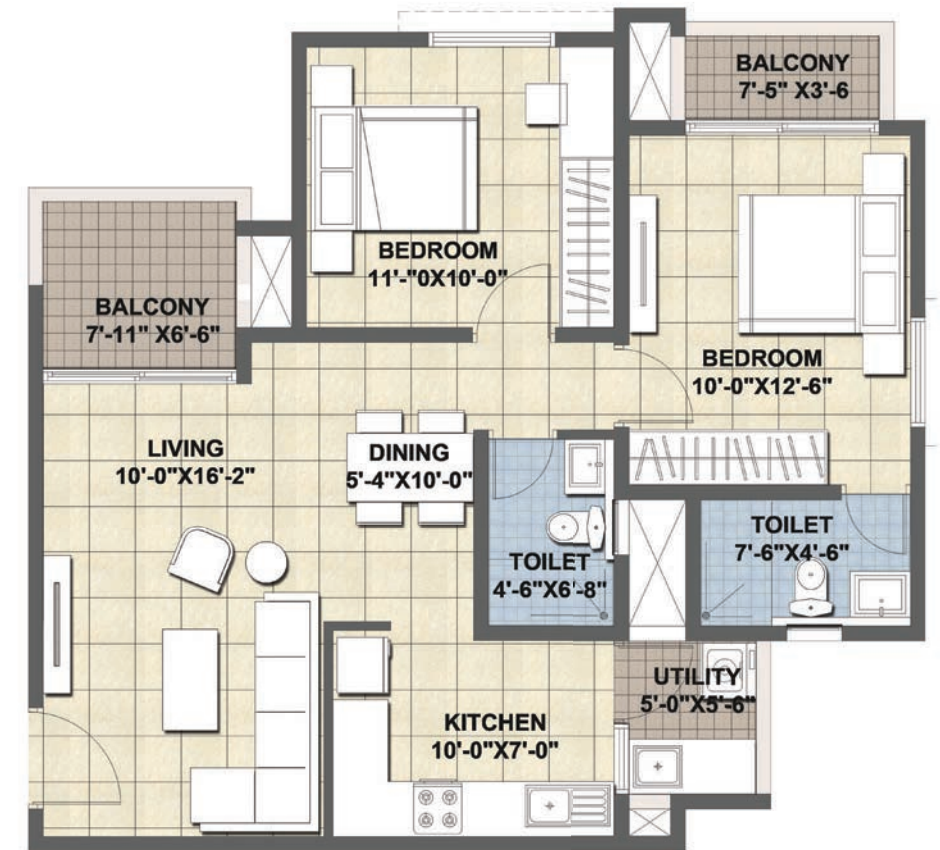


1 BED 666 SQ. FT.

DESCRIPTION	SUPER BUILT-UP AREA (SQ. FT.)	CARPET RERA AREA (SQ. FT.)	UTILITY / BALCONY (SQ. FT.)
1 BEDROOM + 1 TOILET	666	419	65.12

2 BHK
1008 SQ. FT.

DESCRIPTION	2 BEDROOM + 2 TOILET
SUPER BUILT-UP AREA (SQ. FT.)	1008
CARPET RERA AREA (SQ. FT.)	645
UTILITY / BALCONY (SQ. FT.)	101.93

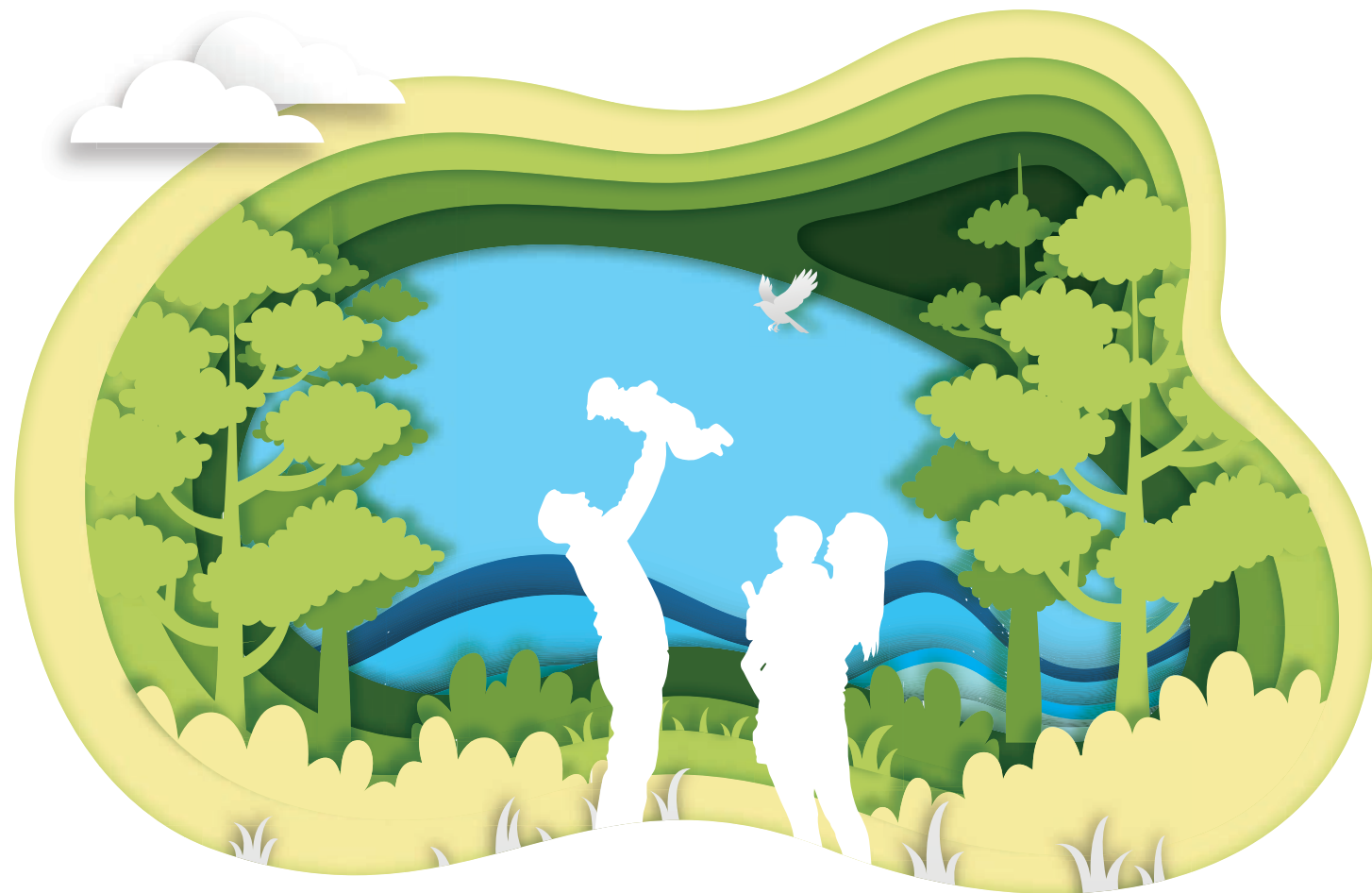


2 BHK LUXE
1170 SQ. FT.

DESCRIPTION	2 BEDROOM + 2 TOILET
SUPER BUILT-UP AREA (SQ. FT.)	1170
CARPET RERA AREA (SQ. FT.)	768
UTILITY / BALCONY (SQ. FT.)	118



ASPIRE HIGH, PAY SMART



Ajmera Lakeside Paradise exemplifies the epitome of an exceptional lifestyle at an unbeatable price point. The remarkable value it holds is bound to leave you in awe. We bet you can't find another A-grade developer in this micro-market capable of presenting a dream deal that surpasses ours!

WHEN LEGACY MEETS LUXURY, IT BRINGS AN OPPORTUNITY LIKE NEVER BEFORE!

54+ YEARS
LEGACY

PRESENCE ACROSS
6 CITIES AND
2 COUNTRIES

47 MILLION
SQ. FT.
UNDER DEVELOPMENT

ASIA'S LARGEST
TOWNSHIP WITH
17,000
HOMES IN 1980

TRANSFORMING
BENGALURU
SKYLINE SINCE
2006

30+
MILLION SQ. FT.
DELIVERED

1ST MALL
WITH MULTIPLEX
IN MUMBAI 2001

EVOLVED LOCATIONS
& BROUGHT LIFESTYLE
TRANSFORMATION

CREATED CENTRAL MUMBAI'S
BIGGEST
PRIVATE THEME
GARDEN
OF **25 ACRES**

4 MILLION
SQ. FT.
DEVELOPED ACROSS
6 PROJECTS AND **2 ONGOING**

ESTABLISHED AJMERA
GLOBAL SCHOOL
(2006) & AJMERA ICSE
SCHOOL (2015)

45,000+
HAPPY FAMILIES

DEVELOPED
WADALA AS A PRIME
RESIDENTIAL BELT WITH
AJMERA I-LAND

WORLD'S
LARGEST
DOME THEATRE
AT AJMERA I-LAND,
CENTRAL MUMBAI

AJMERA INFINITY ESTABLISHED
ELECTRONIC
CITY'S
FIRST LANDMARK

**INDIA'S LEADING
MULTI-NATIONAL
REALTY
CORPORATION**



AJMERA
LAKESIDE
paradise

📍 YELAHANKA

SITE ADDRESS: SY.7/1, 7/2, 7/3, 9/1, 9/2, 10; KEMPAHALLI VILLAGE, YELAHANKA HOBLI,
BENGALURU, NORTH TALUK, KARNATAKA 560 064.

Disclaimer: Information in this brochure, about project are of very general in nature. The picture, layout themes, project landscape, interiors, lighting, specification and amenities in this brochure/advertisement and promotional documents are only representational and informative. Information images and visuals, drawings plans or sketches shown in this brochure/advertisement and other promotional documents are only an architect's impression and are only indicative of the envisaged developments, this may vary during the execution. The Promoter reserves the right to make additions, deletions, alterations or amendments as and when it deems fit and proper, without any prior notice. Furniture shown in the plans is only for the purpose of illustrating a possible layout and does not form a part of the offering or specification. The relationship between the promoter and the actual customers will be governed strictly by the agreements to be executed from time to time and not on the terms of this brochure/advertisement or other promotional documents. You are required to verify all the details of the project independently prior to concluding any decision of buying in Ajmera Lugaano. The content of this brochure should not be treated as any kind of an offer by the Promoter.